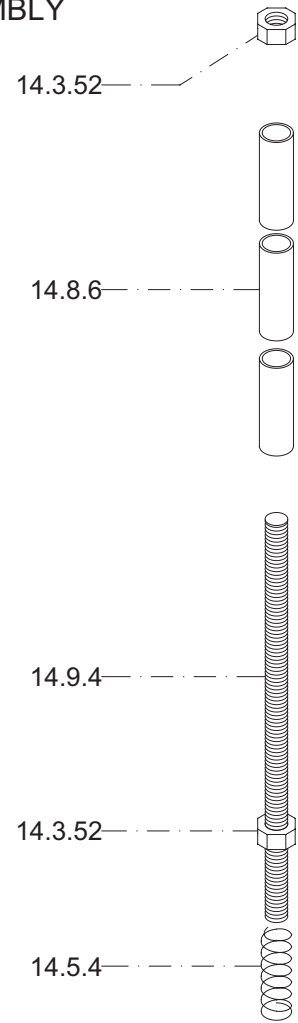
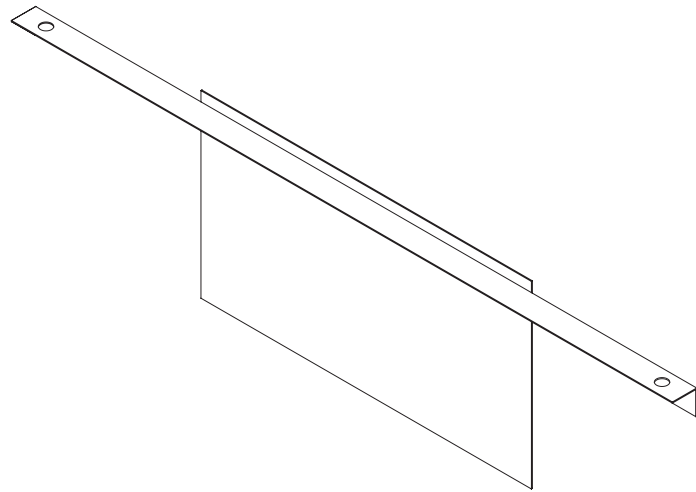


REPLACEMENT PARTS			
DESCRIPTION	NEW CODE	OLD CODE	PRICE
Louver fin center	10.1.D	AA1633	8.00
Louver fin side	10.2.D	AA1634	5.00
Gold louver fin center	10.11.D	AA1633G	25.00
Gold louver fin side	10.12.D	AA1634G	15.00
Pewter fin center	10.21.D		25.00
Pewter fin side	10.22.D		15.00
Louver hardware assembly	99.10.04.D		15.00
Spacer 1/4"ID X 1 3/16"	14.8.6	R6154	P/A
Nut 1/4	14.3.52	R1415	P/A
Louver rod 5/32"	14.9.4	R6419	P/A
Retention spring for louvers	14.5.4	R6310	P/A
Louver block plate assembly	99.10.05.D		20.00
Hinge pin	14.17.47	9.1.D-R6455	12.00
Hinge block	14.17.48	9.4.D-R6456	35.00
Glass center	14.7.4	9.15.D-R6262	240.00
Glass right	14.7.5	9.16.D-R6263	70.00
Glass left	14.7.6	9.17.D-R6264	70.00
Glass gasket	14.10.2	R7002	10.00
Glass retainer	9.7.DP	A975	5.00
Gasket replacement kit	FDGRK7		25.00
Gasket 5/8"	14.10.3	R7005	P/A
Gasket 1/4"	14.10.5	R7009	P/A
Door closure assembly	99.09.01.D	AA1671	30.00
Door rod retainer	9.3.D	AA1678	P/A
Door closure rod	9.2.D	AA1684A	P/A
Door closure catch	14.17.84	9.9.D-AA1670	P/A
Door latch catch	9.6.D	AA1672	P/A
Handle wood	14.6.1	R6012	5.00
Steel baffle	2.8.D	A1602	40.00
Refractory complete set	99.11.01.D		220.00
Back right refractory	11.1.D	R4601	35.00
Back left refractory	11.2.D	R4602	35.00
Right side refractory	11.3.D	R4603	40.00
Left side refractory	11.4.D	R4604	40.00
Bottom right refractory	11.5.D	R4605	45.00
Bottom left refractory	11.6.D	R4606	45.00
Front right refractory	11.7.D	R4607	20.00
Front left refractory	11.8.D	R4608	20.00
Front center refractory	11.9.D	R4609	15.00
Primary air screen	7.9.D	AA1675	25.00
Secondary air tube	7.8.D	AA1696	60.00
Draft control assembly	1.7.5.DP	A985	130.00
Draft control gasket	7.2.DNP	A989	4.00
Spring	14.5.6	R6307	2.00
Draft control handle	14.6.2	R6000	4.00
Draft control lever	4.1.DNP	A953	10.00
Chain and pendant assembly	99.06.01.D		10.00
Chain # 10	14.17.3	R6110	P/A
Detachable pendant	14.17.4	R6121	P/A
Terminal block assembly	99.12.01.D		25.00
Terminal block	1.12.1.DNPR	AA1088W	P/A
Terminal block cover	12.2.DNPR	AA1089	P/A
NOT AVAILABLE			N/A
PART OF ASSEMBLY			P/A

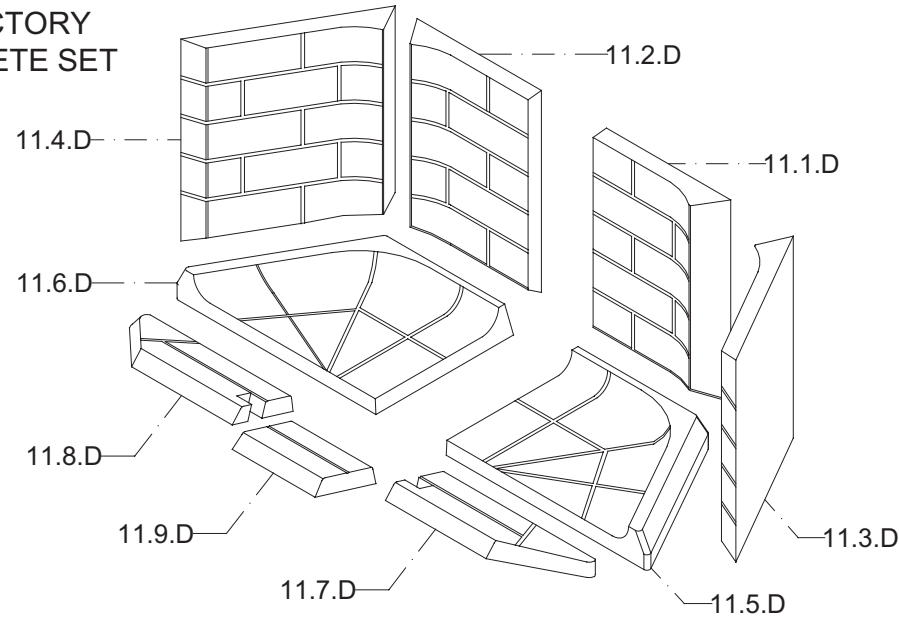
**99.10.04.D**  
LOUVER HARDWARE  
ASSEMBLY



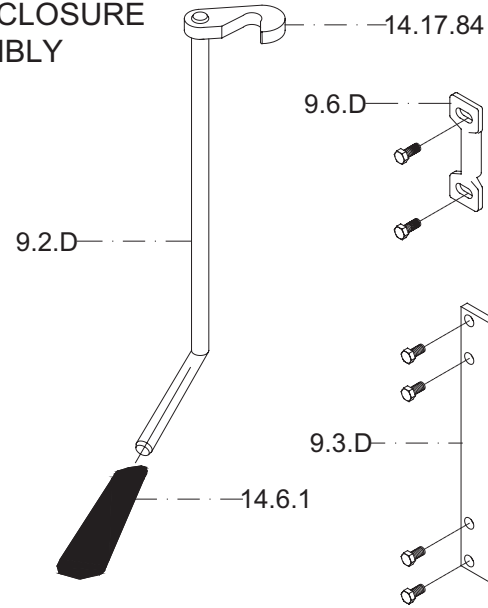
**99.10.05.D**  
LOUVER BLOCK PLATE ASSEMBLY  
(TOP CENTER LOUVER ONLY)



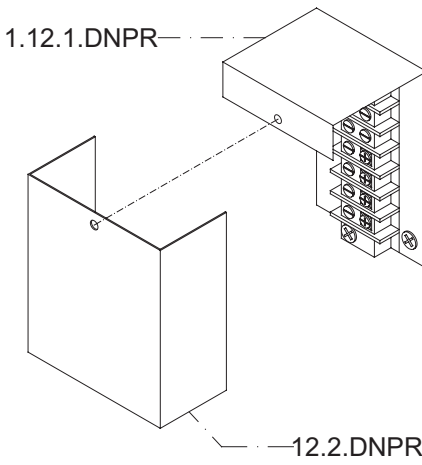
**99.11.01.D**  
REFRACTORY  
COMPLETE SET



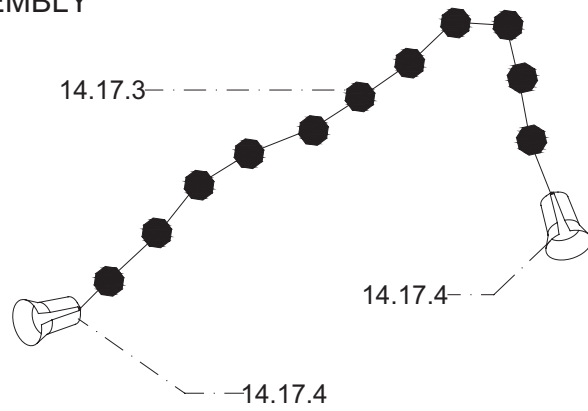
**99.09.01.D**  
DOOR CLOSURE  
ASSEMBLY



**99.12.01.D**  
TERMINAL BLOCK  
ASSEMBLY



**99.06.01.D**  
CHAIN & PENDANT  
ASSEMBLY



**REPLACEMENT PARTS**

DESCRIPTION	NEW CODE	OLD CODE	PRICE
Louver fin center	10.1.D	AA1633	8.00
Louver fin side	10.2.D	AA1634	5.00
Gold louver fin center	10.11.D	AA1633G	25.00
Gold louver fin side	10.12.D	AA1634G	15.00
Pewter fin center	10.21.D		25.00
Pewter fin side	10.22.D		15.00
Louver hardware assembly	99.10.04.D		15.00
Spacer 1/4"ID X 1 3/16"	14.8.6	R6154	P/A
Nut 1/4"	14.3.52	R1415	P/A
Louver rod 5 3/8"	14.9.4	R6419	P/A
Retention spring for louvers	14.5.4	R6310	P/A
Louver block plate assembly	99.10.05.D		20.00
Hinge pin	14.17.47	9.1.D-R6455	12.00
Hinge block	14.17.48	9.4.D-R6456	35.00
Glass center	14.7.4	9.15.D-R6262	240.00
Glass right	14.7.5	9.16.D-R6263	70.00
Glass left	14.7.6	9.17.D-R6264	70.00
Glass gasket	14.10.2	R7002	10.00
Glass retainer	9.7.DP	A975	5.00
Gasket replacement kit	FDGRK7		25.00
Gasket 5/8"	14.10.3	R7005	P/A
Gasket 1/4"	14.10.5	R7009	P/A
Door closure assembly	99.09.01.D	AA1671	30.00
Door rod retainer	9.3.D	AA1678	P/A
Door closure rod	9.2.D	AA1684A	P/A
Door closure catch	14.17.84	9.9.D-AA1670	P/A
Door latch catch	9.6.D	AA1672	P/A
Handle wood	14.6.1	R6012	5.00
Steel baffle	2.8.D	A1602	40.00
Refractory complete set	99.11.01.D		220.00
Back right refractory	11.1.D	R4601	35.00
Back left refractory	11.2.D	R4602	35.00
Right side refractory	11.3.D	R4603	40.00
Left side refractory	11.4.D	R4604	40.00
Bottom right refractory	11.5.D	R4605	45.00
Bottom left refractory	11.6.D	R4606	45.00
Front right refractory	11.7.D	R4607	20.00
Front left refractory	11.8.D	R4608	20.00
Front center refractory	11.9.D	R4609	15.00
Primary air screen	7.9.D	AA1675	25.00
Secondary air tube	7.8.D	AA1696	60.00
Draft control assembly	1.7.5.DP	A985	130.00
Draft control gasket	7.2.DNP	A989	4.00
Spring	14.5.6	R6307	2.00
Draft control handle	14.6.2	R6000	4.00
Draft control lever	4.1.DNP	A953	10.00
Chain and pendant assembly	99.06.01.D		10.00
Chain # 10	14.17.3	R6110	P/A
Detachable pendant	14.17.4	R6121	P/A
Terminal block assembly	99.12.01.D		25.00
Terminal block	1.12.1.DNPR	AA1088W	P/A
Terminal block cover	12.2.DNPR	AA1089	P/A

NOT AVAILABLE N/A  
PART OF ASSEMBLY P/A



*ASSEMBLIES*

*DELTA*